



PEACE NW

PEOPLE Empowered and Communities Enhanced North West

ANNUAL REPORT

2022/2023

A Note From Our Executive Director



These past 12 months have been amazing! We have seen more opportunities to support the members of our beloved community than I had ever imagined.

It has been so good to once again join together in person, while still staying with the remote process as needed. From Trunk or Treat, to picnics in the park, to sitting together with paperwork, or visiting via ZOOM, it has all been a blessing.

With the addition of a grant from the Dan Thompson Memorial Fund we are working across our community to match individuals with housing that fit their unique needs. The success of this program has clearly demonstrated that there is an incredible need to fill.

We have expanded our reach to include Wahkiakum and Cowlitz Counties into the areas of Klickitat, Skamania, Spokane and Clark counties which we already serve. And of course, you will always find us in Olympia when the State Legislature is in session. But regardless of where any individual resides, PEACE NW will be there to help in whatever way possible.

But the most important thing in our community is You! Whether you are reaching out for support for a loved one, finding your own voice, or you are working in support of our mission, we are so grateful for You!

With love and PEACE,

Daria Helt
Executive Director

Remembering Why We Are Here

Mission

Enhancing community for Individuals of all abilities.

Vision

Individuals have the connection and support they need to live out the life of their dreams.

Values

- *Interdependency*
- *Accompaniment*
- *Respect*
- *Grace*
- *Equality*
- *Resiliency*
- *Beloved Community*
- *Integrity*
- *Joy*
- *Gratitude*

Serving Our Mission

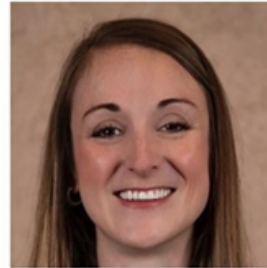
Key Volunteers



Daniel Smith
Board President



Alice Rolfe
Board Vice-President



Maggie Pietka
*Board Secretary/
Treasurer*



Kris Krohn
Board Member



Dave Carl
Board Member



Eva Luchini
Board Member



Sidney Morgan
Board Member

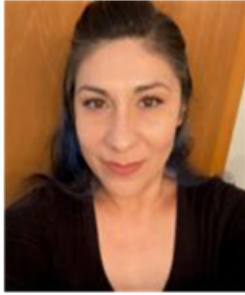


Tyler Stepper
Board Member



Debbie Roberts
Board Member

Serving Our Mission Staff



Addie Alvarez
Parent2Parent Multi-Cultural



Rory Banaszek
General Clerk



Sara Bradshaw
Outreach Coordinator



Tanya English
CCPC Multi-Cultural



Mona Fuerstenau
Dan Thompson Grant



Elizabeth Hutton
CCPC Coordinator



Darci Ladwig
Housing Coordinator



Jan Pound
Administrative Assistant



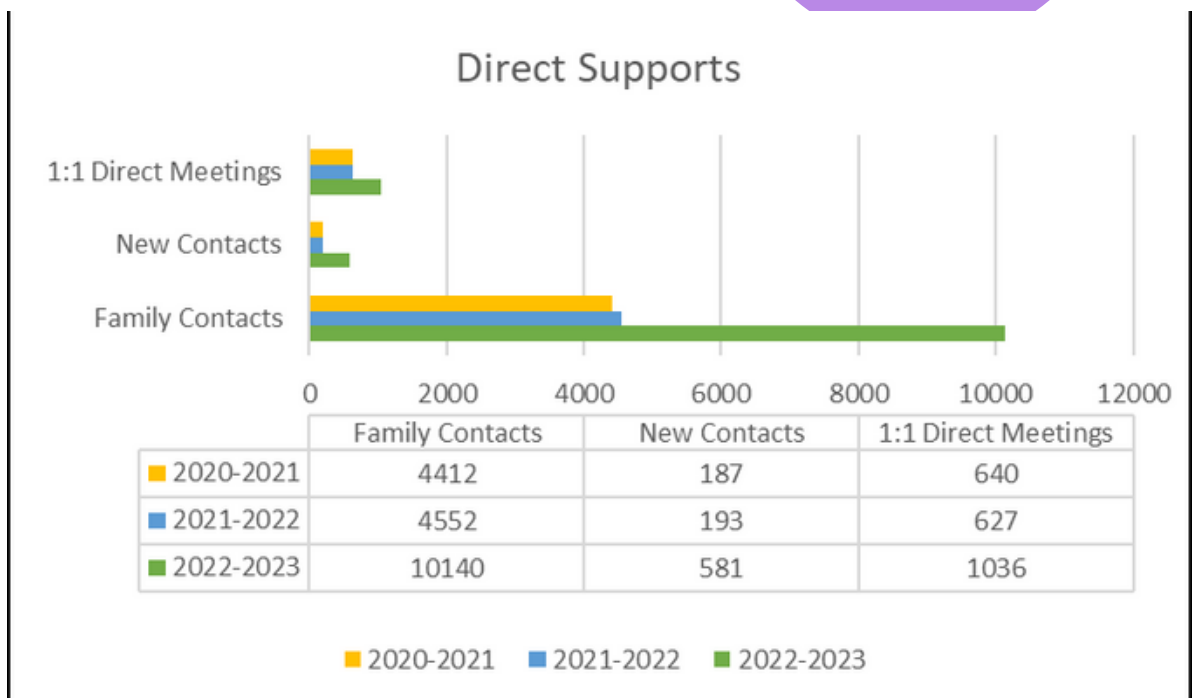
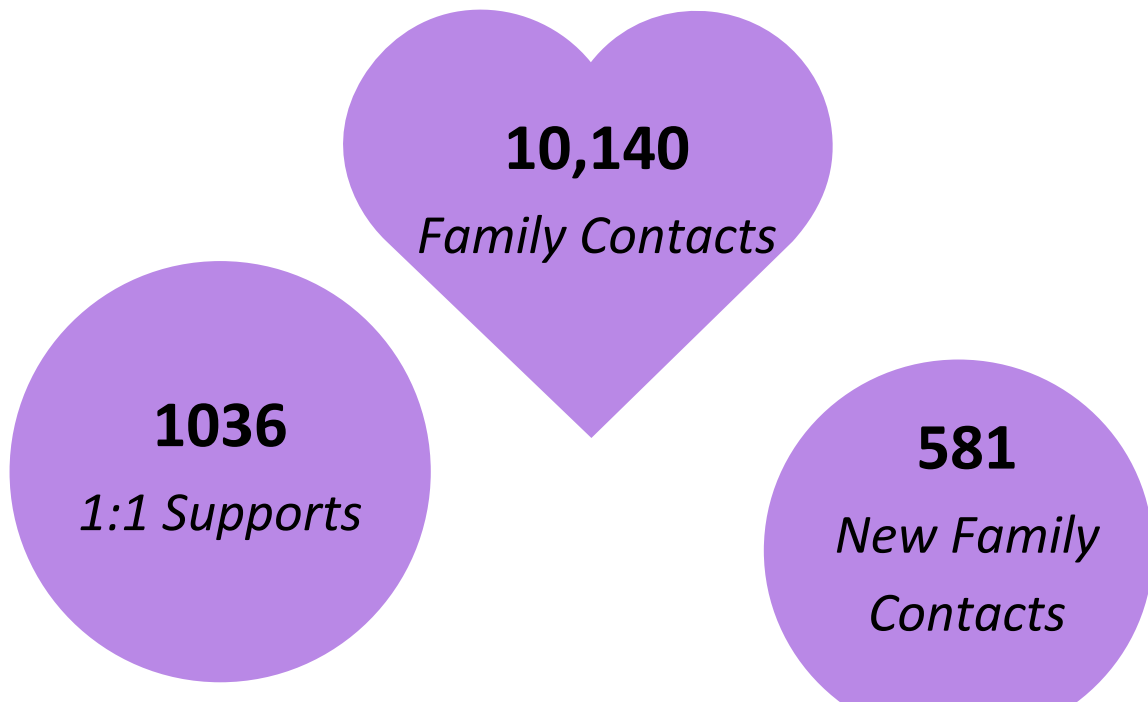
Hattie Stigum
CCPC Coordinator



Theresa Van Pelt
Parent2Parent Coordinator

PEACE NW in Our Community - Direct Support

PEACE NW works in a variety of ways to reach and sustain the I/DD Community. The goal is always to provide support and information to those looking for direction as they navigate systems and acquire resources.



PEACE NW in Our Community - Direct Support

We focus on the families and the individual, providing support as they work to build the life of their dreams



For individuals 18 and over, PEACE NW facilitated:

- *106 Building Independence Weekly Meetings*
- *33 People participating in People First of SW Washington*
- *40 Fall Formal participants*
- *31 Attendees in 'So You Want to Date' classes*
- *21 Participants in Sexual Health and Disability*
- *104 Parents and Advocates for 'Parenting 18 and Above' Zoom meetings*

PEACE NW in Our Community - Direct Support

Of course, PEACE NW offers opportunities for all ages to take part in events designed to be inclusive to everyone.

Special Celebrations continues to offer popular activities such as a visit to the pumpkin patch and Harvest Festival, the ever popular Sensitive Santa, and the all comers Easter Egg hunt.



166 Participants registered
to visit Santa and his...
Reindeer?

Special Celebrations Supported Events:

- *Fall Festival*
- *Bi-Zi Farms Field Trip*
- *Harvest Festival*
- *Sensitive Santa*
- *Valentine Social*
- *Bingo and Leprechaun Trap Building Contest*
- *Egg Hunt*
- *Aloha to Summer Dance*

PEACE NW in Our Community - Direct Support

In support of parents and caregivers, PEACE NW works to identify and address the needs and issues they express. Whether needing help with paperwork, or being reminded to take care of themselves, PEACE NW is there to fill the need.



- **Wellness Wednesdays**
- **Café con PEACE**
- **School Support**
- **Meet in the Middle**
- **SSI Paperwork**
- **Guardianship**

PEACE NW in Our Community - Direct Support

PEACE NW has long recognized the challenge individuals with I/DD face in finding appropriate housing. This year, with resources and funding provided by Clark and Spokane Counties, and a successful grant proposal to the Dan Thompson Memorial Fund, PEACE NW has been facilitating this successful transition to independent living.

Working with Partners4Housing, whose process provides initial screening, our Housing Program has:

- Screened 67 candidates for housing
- Facilitated 7 individuals onto Section 8 Housing vouchers
- Processing an additional 10 individuals for Section 8 vouchers
- Placed 5 individuals into subsidized housing
- Moved 1 individual into Foundational Community Supports in Spokane and another into AFH



"I am so glad I had the opportunity to go through this process with CT and you. You had so much patience, so my mantra is 'What would PEACE do'...but on a serious note thank you again for all of your support during the process."

-Briana, Grandparent Vancouver

PEACE NW in Our Community - Working Together

Always critical to our success are the partners we are blessed to work with throughout the year. It doesn't matter if they are legislators in Olympia or a grass roots organization, each plays a role in recognizing the I/DD community and working towards the quality of life for each individual.



- 4 Districts Candidates Forum
- 15 Candidates Participated
- 58 Constituents Evaluating Candidates
- 87 Registered Participants in Advocacy Days

- 149 Trainings Hosted
- 913 Community Meetings Attended
- 19,000+ Collaborations with Federal, State, and Local Professionals.

